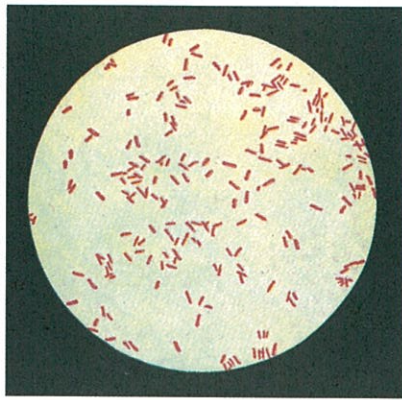
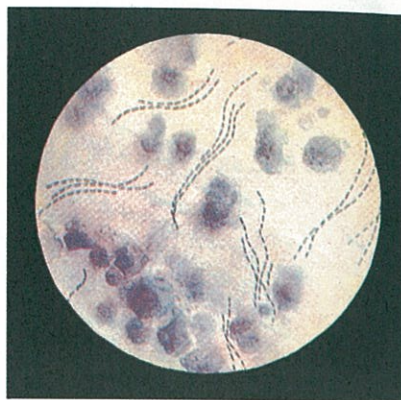


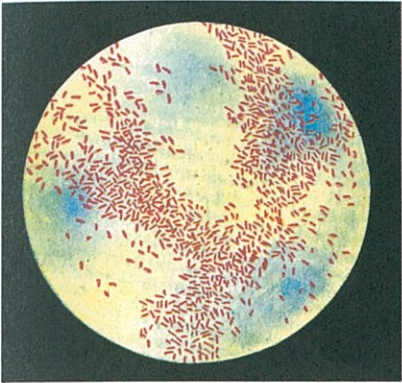
**Brucella melitensis.**  
Carbol-fuchsin stain.



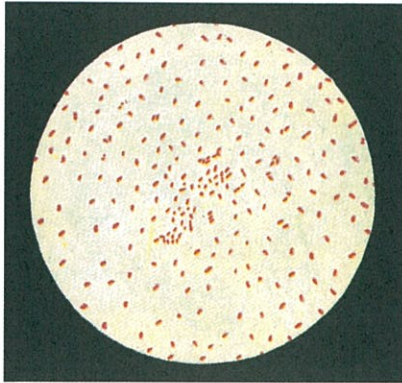
**Pseudomonas aeruginosa.**  
Gram stain.



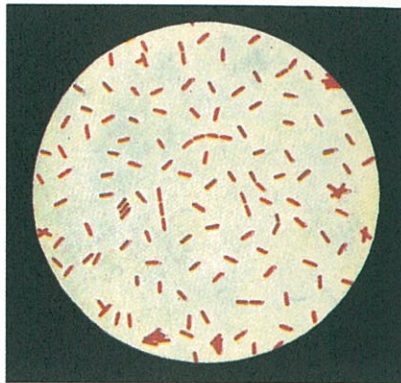
**Haemophilus ducreyi.**  
Gentian violet stain.



**Haemophilus influenzae.**  
Gram stain.



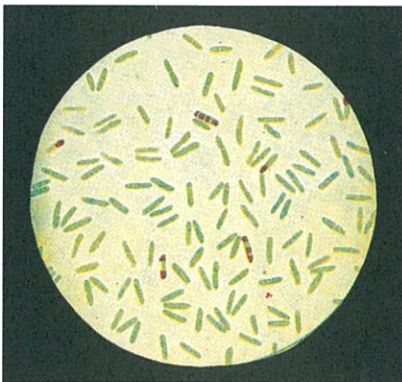
**Bordetella pertussis.**  
Gram stain.



**Moraxella lacunata.**  
Carbol-fuchsin stain.



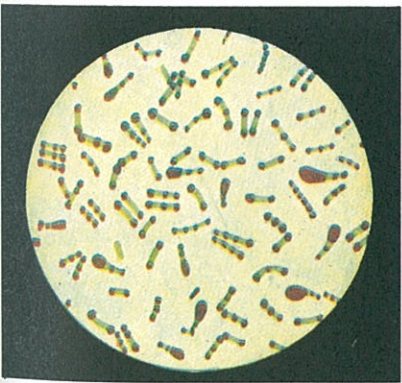
**Corynebacterium acnes.**  
Gram stain.



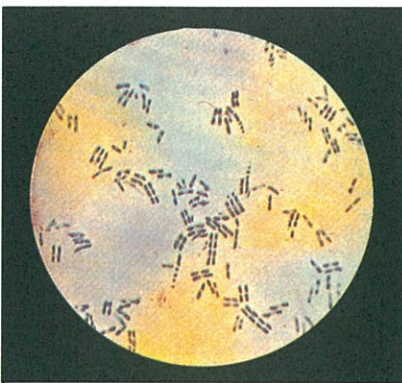
**Corynebacterium xerosis**  
Albert's stain.



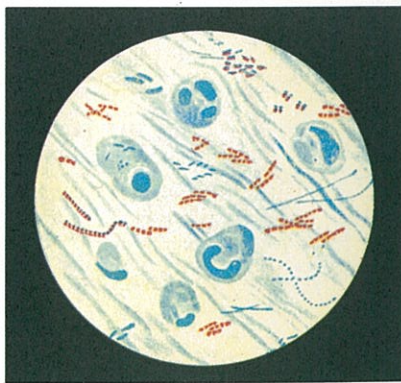
**Corynebacterium diphtheriae.**  
Gram stain.



**Corynebacterium diphtheriae.**  
Albert's stain.



**Corynebacterium pseudodiphtheriticum.**  
Gram stain.



**Mycobacterium tuberculosis.**  
Ziehl-Neelsen stain.